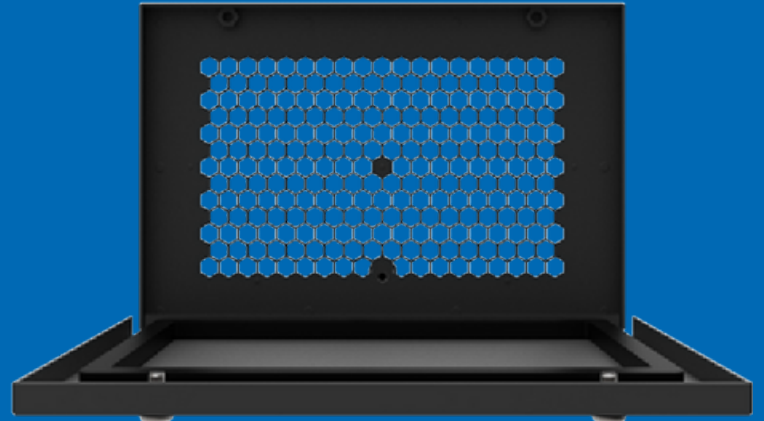


# CAP-ENV-PDS Series

The Toughest and Most Reliable IR,  
Ultrasound & Partial Discharge Inspection  
Window



## Look & Listen Simultaneously

Quickly and Safely perform closed  
panel inspections of electrical  
equipment with Infrared and  
Ultrasound

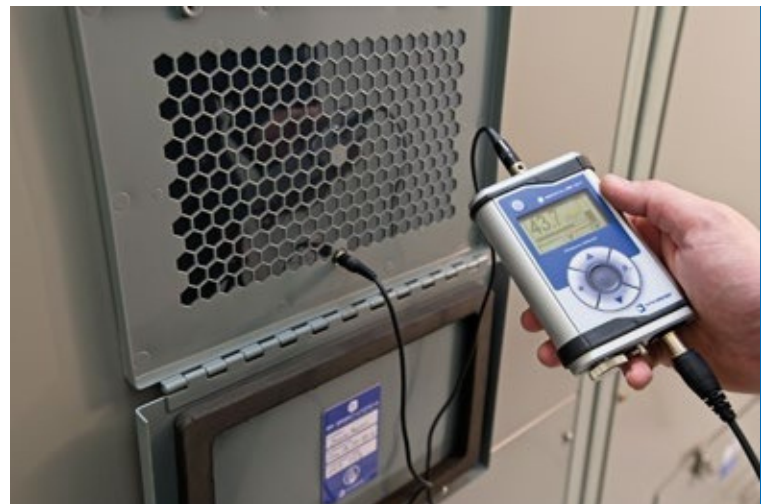
## Arc Containment Tested

The CAP-ENV PDS Series was  
successfully tested to the IEC  
62271-200 standard for arc  
containment on metal enclosed  
switchgear assemblies.

## UL Listed

Having passed rigorous standards  
and testing, our inspection windows  
are UL Listed (E491496). This  
demonstrates our dedication to  
continued safety and security in the  
ever-changing world of electrical  
power and distribution.

The environmentally reinforced CAP-ENV-PDS is a revolutionary inspection window. It combines the power of Thermal Imaging, Visual, UV, Ultrasound and Partial Discharge inspections. Industrial applications require solutions that meet numerous criteria where safety and performance are of the utmost importance. The exclusive pharmaceutical-grade reinforced polymer system allows any thermography camera to monitor completely undisturbed assets inside energized electrical equipment in the visual, UV and shortwave, midwave and longwave IR spectrums.



Model	CAP-ENV-PDS-4	CAP-ENV-PDS-6	CAP-ENV-PDS-12	CAP-ENV-PDS-18	CAP-ENV-PDS-24
Overall Height	15.24 cm (6 in)	21.8 cm (8.6 in)	20.6 cm (8.1 in)	22.8 cm (9 in)	21.8 cm (8.6 in)
Overall Width	15.24 cm (6 in)	16 cm (6.3 in)	30.5 cm (12.0 in)	46.5 cm (18.3 in)	61 cm (24.0 in)
IP/ NEMA Environment Rating	IP67 / NEMA 6				
Operating Temperature					
Body Material	Powder Coated Stainless Steel				
Gasket Material					
Hardware Material	316 Stainless Steel				
Voltage Range	Any				
Automatically Grounded	Yes				
Viewing Aperture Height	9.77 cm (3.85 in)	15 cm (5.9 in)	12.7 cm (5.0 in)	14 cm (5.5 in)	15 cm (5.9 in)
Viewing Aperture Width	9.68 cm (3.81 in)	9.1 cm (3.6 in)	23.6 cm (9.3 in)	39 cm (15.4 in)	53 cm (20.9 in)
Optic Material					
Optic Reinforcing Grill Material	Stainless Steel Reinforcing Grill (IP22/ IP2x Standard)				
	40.0± 1.0KHz				
Bandwidth (-6dB)	2.5KHz				
Capacitance at 1KHz ±20%					
Max. Driving Voltage (cont.)	20 Vrms				
Total Beam Angle -6dB	50° typical				
Receiver Housing Material	Aluminum				
<b>Inspection Capabilities and Applications</b>					
Midwave IR and Longwave IR; Ultraviolet (UV); Ultrasound; Visual Inspection; Medium/High Voltage Applications					
UL Listed (E491496)					
Resistance, 508A: ANSI 508A					
CSA C22.2 No. 14-13, C22.2 No. 14-10, C22.2 No. 94-M91, C22.2 No.94.1-07, C22.2 No. 94.2-07					
Lloyds of London Type Approval					
American Bureau of Shipping (ABS)					
DNV (Det Norske Veritas) P261.1E Maritime, Vessel and Offshore Applications					
IEEE C37 20.7 Type 2B, C37 20.2.a.3.6: Impact and Load					
IEC 62271-200, 60262271-200,60298 Appendix A, 60068-2-6:2007, 60068-2-3, 60068-2-78:2012					
Other					
Warranty	Unconditional Lifetime Warranty				

\*Caution: These dimensions are not installation dimensions. Do NOT cut prior to receiving your IRISS IR window and installation template.



N. America (HQ)  
+1(941)907-9128  
info@iriss.com

LATAM/APAC  
+1(941)704-4445  
info-latam@iriss.com

Europe  
+44(0)843-507-0099  
info-emea@iriss.com

Qatar  
+974-399-24-0-24  
info-mena@iriss.com

India  
+91-22-4969-0921  
info-india@iriss.com



www.iriss.com